

Shenzhen Optostar Optoelectronics Co., Ltd was founded in May 2006, headquartered in Nanshan District, Shenzhen, China. As a leading manufacturer and supplier for fiber optical components and System Products in China, we can offer our customers with active components, passive components and system products for fiber optical communication fields such as metro network, access network, fiber channel and FTTX etc. Our company has perfect techniques and production plane, abundant technology development capability and rich OEM & ODM co-operation experience with famous overseas companies. We promise to provide our customers with our high quality products and our best services. To achieve your 100% satisfaction is our persistent goal! Looking forward to establishing a long-term and steady co-operation relationship with you!

Optical Transceiver



1*9 Transceiver



- Data rate from 155Mb/s to 1.25Gb/s
- 850nm/1310nm/1550nm/CWDM Laser diode
- Industry standard 1x9 package
- Duplex/Bi-DI SC receptacle and plastic Package
- Single +5V or +3.3V power supply & PECL or LVPECL interface
- Compliant with specifications for IEEE 802.3z
- Compliant with specifications for G.957/958



GBIC Transceiver



- Single +3.3V or +5V Power Supply
- Hot-Pluggable Duplex SC Connector
- Gigabit Ethernet 1000Base-SX/LX/XD/ZX at 1.25Gb/s Optional
- Eye Safety, Meet Laser Class1, Compliant with IEC60825-1
- Compliant with Telcordia (Bellcore) GR-468-CORE
- Compliant with Specifications for IEEE-802.3
- Compliant with ANSI Spec. for Fiber Channel Applications at 1.06Gb/s



SFP Transceiver



- Data rate 155M/622M/1.25G/2.5G
- 850nm/1310nm/1550nm laser diode transmitter
- PIN/APD photodiode receiver
- SFP MSA package with duplex LC connector
- +3.3V single power supply
- Digital Diagnostic Monitor Interface
- Very low EMI and excellent ESD protection
- Distance from 100m to 120km
- CWDM option



SFF Transceiver



- Data rate 155M/622M/1.25G/2.5G
- 850nm/1310nm/1550nm laser diode transmitter
- PIN/APD photodiode receiver
- SFF MSA package with duplex LC connector
- +3.3V single power supply
- Digital Diagnostic Monitor Interface
- Very low EMI and excellent ESD protection
- Distance from 100m to 120km
- CWDM option
- 2*5 or 2*10 option

Optical Transceiver



XFP Transceiver



- 850nm/1310nm/1550nm laser diode transmitter
- Support 9.95Gb/s to 11.3Gb/s data rate
- Less than 2.5W power consumption
- XFP MSA package with duplex LC connector
- Digital Diagnostic Monitor Interface
- Very low EMI and excellent ESD protection
- +3.3V/5V power supply
- Operating temperature range 0°C to 70°C
- No reference clock requirement



Xenpak Transceiver



- 850nm/1310nm/1550nm laser diode transmitter
- Support 10Gb/s data rate
- Adaptable Power Supply (APS:+1.2V)
- SC duplex Optical connector
- Hot pluggable 70-pin connector with XAUI electrical interface
- Management and control via MDIO 2-wire interface
- Temperature Range 0 to 70°C



X2 Transceiver



- Compatible with X2 MSA Rev2.0b
- 850nm/1310nm/1550nm laser diode transmitter
- Support of IEEE 802.3ae 10GBASE-LR at 10.3125Gbps
- Power supply: +5.0 V/ +3.3 V, APS:+1.2 V
- Hot Pluggable 70-PIN Connector with XAUI Electrical Interface
- Management and control via MDIO 2-wire interface
- Temperature Range: 0~ 70 °C



SFP+ Transceiver



- 850nm/1310nm laser diode transmitter
- Hot Pluggable
- Power supply: +3.3 V
- Operating case temperature: 0 to 70°C
- Low power consumption
- All-metal housing for superior EMI performance

Media Converter



Unmanageable Media converter



10/100M



10/100/1000M



10/100M



10/100/1000M



Manageable Media converter



10/100M, 10/100/1000M remote manageable



10/100M with SNMP manage

PDH Multiplexer/Protocol Converter



PDH Multiplexer



16E1



4E1+10/100BaseT



2E1+2*10/100BaseT



1+1 Fiber port PDH Multiplexer



Protocol Converter



E1/V.35



V.35/10Base-T



E1/10-100BaseT



FE1/10-100BaseT

Video Transmitter & Receiver



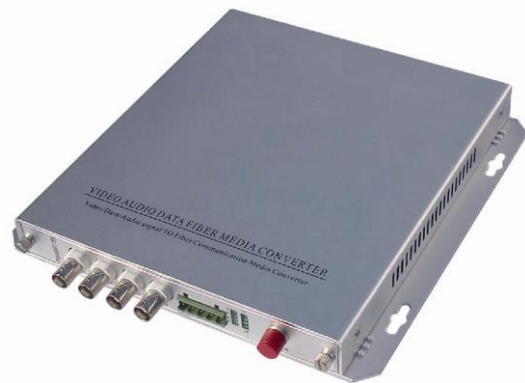
Digital Video Optical Transmitter & Receiver



1 Channel Video+Data



2 Channel Video+Data



4 Channel Video+Data



8 Channel Video+Data



16 Channel Video+Data



32 Channel Video+Data

EPON System Products



ONU



1 PON port; 8 10/100M Ethernet port



1 PON port; 8 10/100M Ethernet port; 1 CATV port



1 PON port; 5 10/100M Ethernet port; 1 10/100/1000M Ethernet port



1 PON port; 4 10/100M Ethernet port; 2 FXS port; 1 FXO port; 1 wireless router port; 1 10/100M(v-port) management port



OLT



32 PON port(1.25G); 32 up motion port(1G); 1 chassis manage port; 8 console port



4 PON port(1.25G); 4 up motion port(1G); 2 lan port (Out-band Management port); 1 console port

CWDM Products/PLC Splitter



OP-CWDM-04



- Model: OP-CWDM-04
- Wavelength: 1470, 1490, 1510, 1530nm
- Datarate: 155M, 622M, 1.25G, 2.5G compatible
- Layer-1 Device
- We can provide SC, LC interface.
- Benfit: Catv , SDH, ATM, Ethernet network



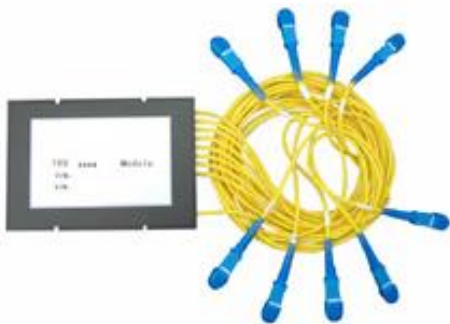
OP-CWDM-08



- Model: OP-CWDM-08
- Wavelength: 1470, 1490, 1510, 1530, 1550, 1570, 1590, 1610nm
- Datarate: 155M, 622M, 1.25G, 2.5G compatible
- Layer-1 Device
- We can provide SC, LC interface.
- Benfit: Catv , SDH, ATM, Ethernet network.



CWDM Module 1x8



CWDM in 19" Rack-Mount



PLC Splitter



PLC Splitter Module 2x32

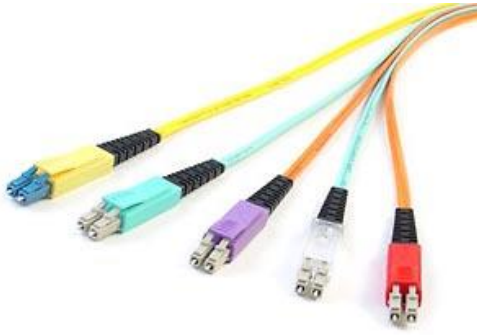


PLC Splitter 2x32 in 19" Rack-Mount

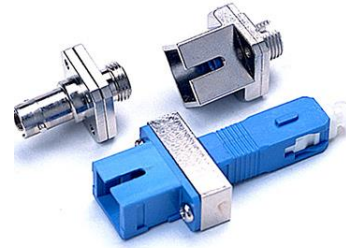
Passive Products



Passive Products



Optical Patch Cord



Optical Adapter



Optical Attenuator



Optical Connectors



Shenzhen Optostar Optoelectronics Co., Ltd

Add:14F,Building A,Haide Building,the Intersection of Nanxin Road and Haide
Second Road Nanshan District,Shenzhen,P.R.China

Tel: 0086-755-26400288, 26400198, 26400268
0086-13728756588(Roya Yang)

Fax: 0086-755-26411001

Email: info@optostar.com.cn

Website: www.optostar.com.cn