



LC/UPC Male to Female build out Multimode 50um attenuator



Shenzhen Optostar Optoelectronics Co., Ltd

2011. 03(Version 2)

Overview

OPTOSTAR offers a wide range of fiber optic Attenuators. Available for Singlemode 9/125, Multimode 50/125 and Multimode 62.5/125 applications. Our Male to Female buildout Optical Attenuation (pads) are available in all fiber modes. LC attenuators, ST, SC, LC/APC, SC/APC, FC and FC/APC types.

Fiber optic attenuators are used in fiber optic communications to reduce the optical fiber power by a certain level. The most commonly used type is female to male plug type fiber optic attenuator. It has the optical fiber connector at one side and the other side is a female type fiber optic adapter, fiber optic attenuator name is based on the connector type and the attenuation level. LC 5dB fiber optic attenuator means this attenuator use LC fiber optic connector

LC Multimode 50um/125nm, Male-Female attenuators contain doped fiber suitable for both 850nm and 1300nm operation. Fixed attenuation values are available in 1dB increments from 1 to 25dB.

Product Features

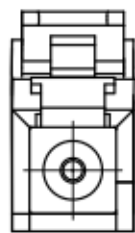
- High Precision Fiber Optic Ceramic Ferrules
- Snap in Body for Fast Mating and De-Mating
- Highly Reliable Physical Contact Connectors
- Accurate Attenuation
- Free of Hazardous Substances According to RoHS 2002/95/EG to be RoHS Compliant
- 1310 to 1550nm Wavelength Singlemode Attenuators
- 850nm Attenuation for Multimode 50μm and 62.5μm
- Attenuating material-Ion Doped Fiber

Application

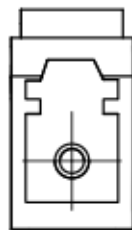
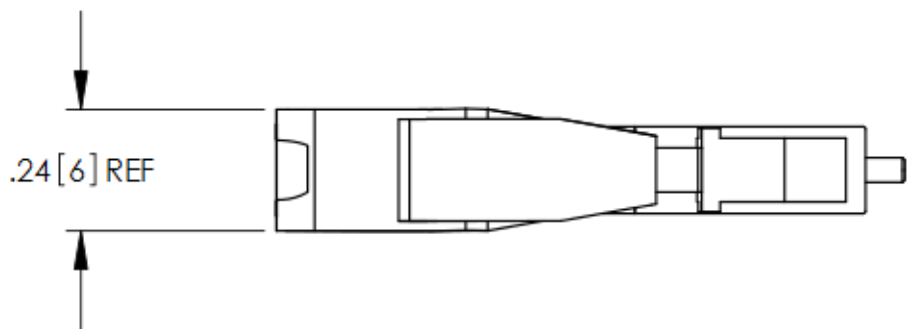
- Fiber optic communication systems.
- Fiber optic CATV
- Fiber optic test

Optical Specifications

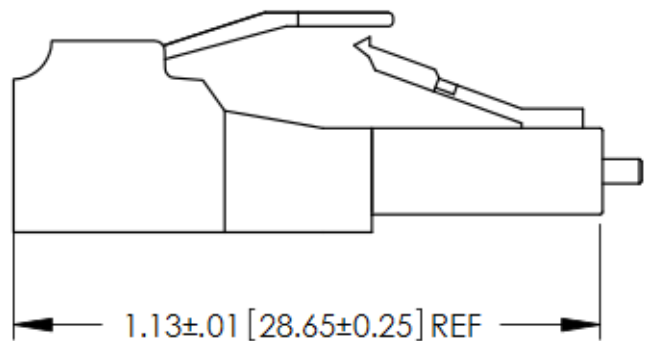
LC/UPC Male to Female build out Multimode 50um attenuator	
Return Loss	<-55dB
Attenuation Tolerance 1 to 10db	+0.5
Attenuation Tolerance 12 to 25db	+5%
Single Mode Wavelengths (nm)	1310nm and 1515nm
Multimode Wavelengths (nm)	850nm and 1310nm
Operating Temperature (C)	-40C to +75C
Compliance	RoHS
Connector Body Color	Blue (SM) or Beige (MM)
Attenuation value	1-25dB
Connector	LC/UPC



LC PLUG



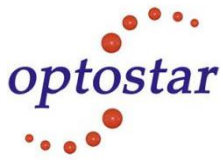
LC JACK



Important Notice

Performance figures, data and any illustrative material provided in this data sheet are typical and must be specifically confirmed in writing by OPTOSTAR before they become applicable to any particular order or contract. In accordance with the OPTOSTAR policy of continuous improvement specifications may change without notice.

The publication of information in this data sheet does not imply freedom from patent or other protective rights of OPTOSTAR or others. Further details are available from any OPTOSTAR sales representative.



Contact OPTOSTAR

Shenzhen Optostar Optoelectronics Co., Ltd

Address:A-14,Haide Building,the Intersection of Nanxin Road and Haide Second Road Nanshan District Shenzhen,China .

Tel: +86-755-26400198 +86-755-26400288 Fax: +86-755-26411001

Email: info@optostar.com.cn

Skype:ouyangroya

Web: www.optostar.com.cn